

**East Midlands Gateway
Phase 2 (EMG2)**

Document DCO 6.11E/MCO 6.11E

ENVIRONMENTAL STATEMENT

Technical Appendices

Appendix 11E

Highways Lighting Strategy

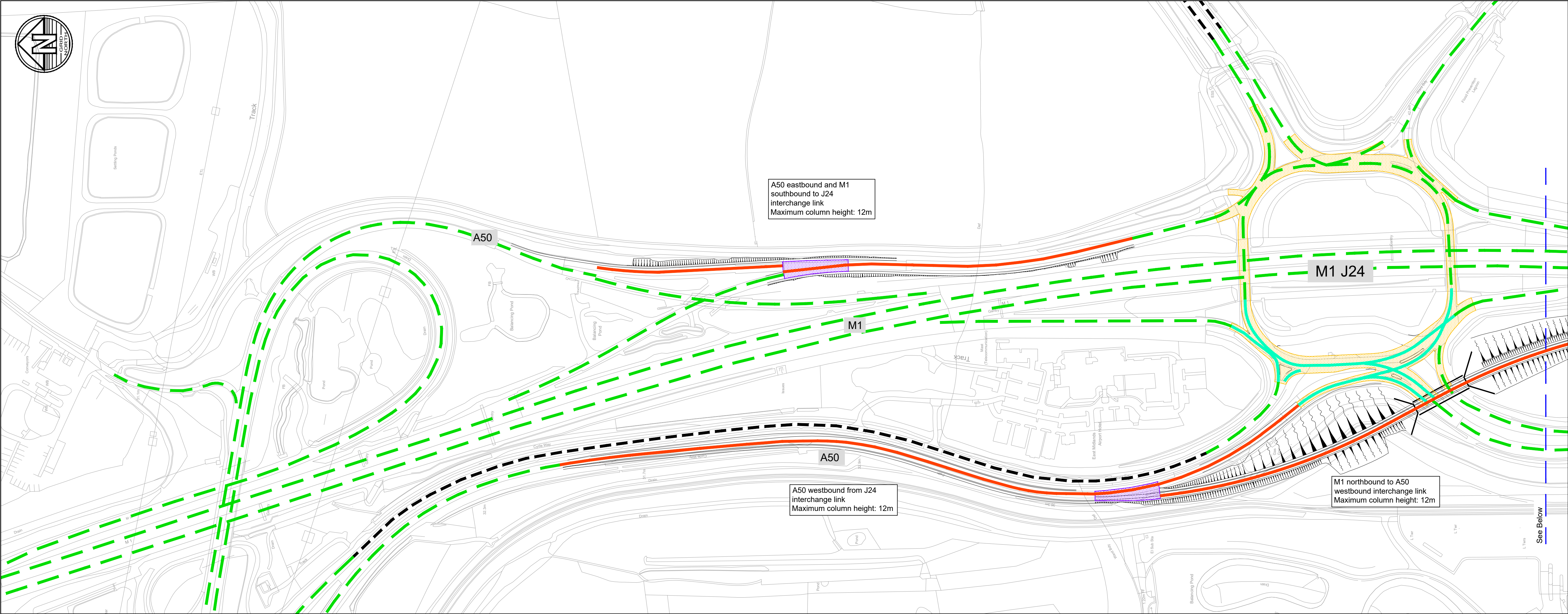
October 2025

11

The East Midlands Gateway Phase 2
and Highway Order 202X and The East Midlands Gateway
Rail Freight and Highway (Amendment) Order 202X

[SEGRO.COM/SLPEMG2](https://segro.com/slpeimg2)

SEGRO



- Notes**
- Do not scale this drawing. All dimensions must be checked/ verified on site. If in doubt ask.
 - This drawing is to be read in conjunction with all relevant architects, engineers and specialists drawings and specifications.
 - All dimensions in metres unless noted otherwise. All levels in metres unless noted otherwise.
 - Any discrepancies noted on site are to be reported to the engineer immediately.

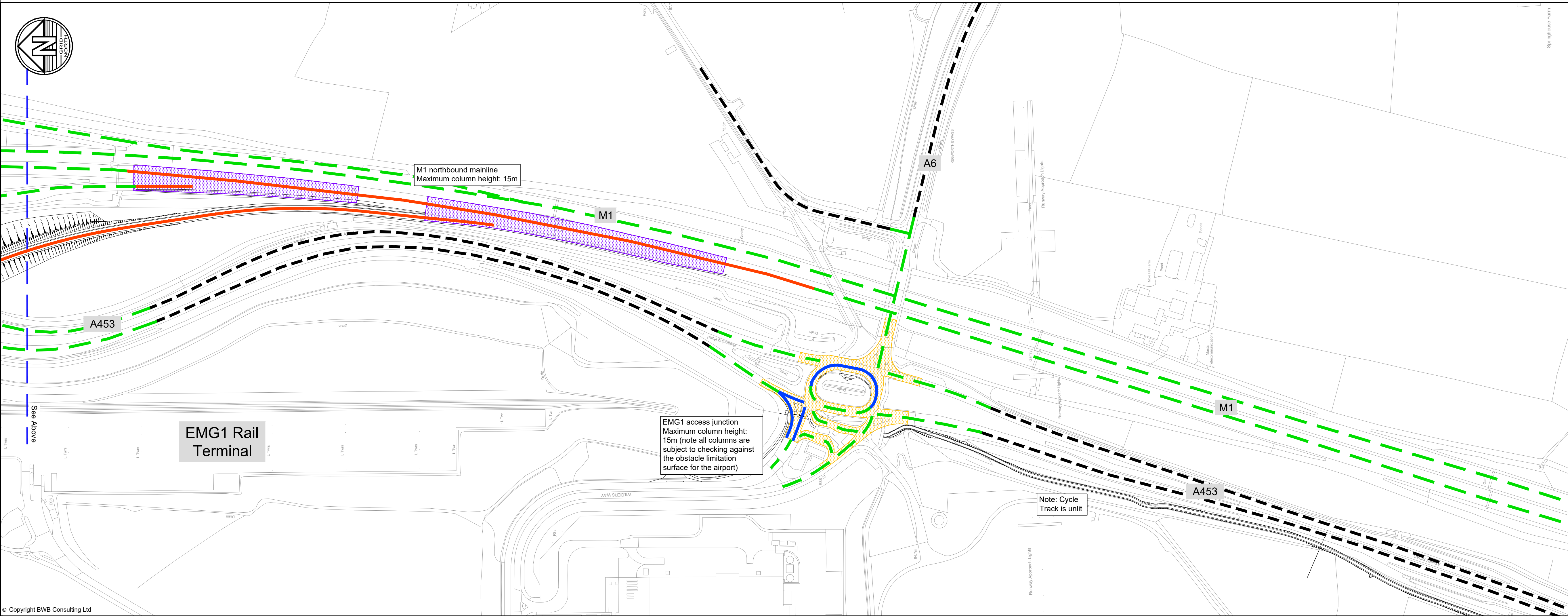
- Legend**
- Unit Road
 - Existing lit section of road - unaffected by scheme
 - New or amended lighting - Design Class M2
 - New or amended lighting - Design Class M3
 - New or amended lighting - Design Class C1
 - New or amended lighting - Design Class C2
 - Conflict Area
 - Merge & diverge areas - not included in conflict area assessment but longitudinal uniformity to be achieved on each lane

0 50 100 150 200
SCALE: METRES

Notes:

Minimum luminous intensity class:

- G*4 for M1 J24
- G*6 for the A453 / EMG1 junction and M1 works in vicinity of the airport



P02	24.06.25	Scheme updated		SRH	SRH
P01	12.03.25	Preliminary Issue		JFP	SRH
Rev	Date	Details of issue / revision		Drw	Rev

Issues & Revisions

BWB
A CAF GROUP COMPANY

■ Birmingham | 0121 233 3322
□ Leeds | 0113 233 8000
□ London | 020 7407 3879
□ Manchester | 0161 233 4260
□ Nottingham | 0115 924 1100
www.bwbconsulting.com

Client

SEGRO

Project Title

**EAST MIDLANDS
GATEWAY 2 (EMG2)**

Drawing Title

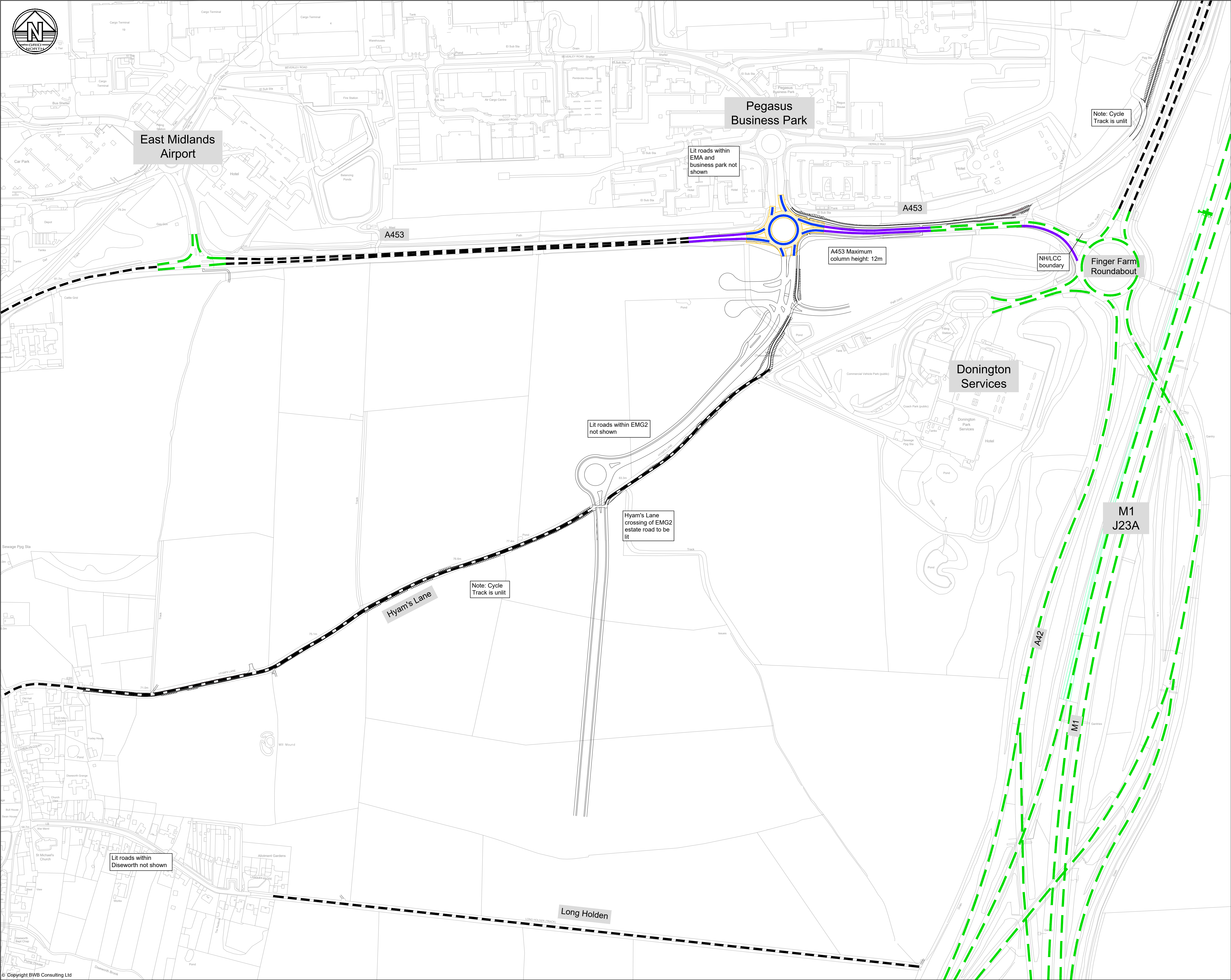
**HIGHWAY WORKS
LIGHTING STRATEGY:
STRATEGIC ROAD
NETWORK**

Drawn:		Reviewed:	
BWB Ref:	220500	Date:	10.03.25
Scale@A1:	1:2500		

Drawing Status

FOR INFORMATION

Project - Originator - Zone - Level - Type - Role - Number	Status	Rev
EMG2-BWB-HLG-ZZ-DR-CH-1300	S2	P02



Notes

- Do not scale this drawing. All dimensions must be checked/ verified on site. If in doubt ask.
- This drawing is to be read in conjunction with all relevant architects, engineers and specialists drawings and specifications.
- All dimensions in millimetres unless noted otherwise. All levels in metres unless noted otherwise.
- Any discrepancies noted on site are to be reported to the engineer immediately.

Legend

- Unit Road
- Existing lit section of road - unaffected by scheme
- New or amended lighting - Design Class M2
- New or amended lighting - Design Class M3
- New or amended lighting - Design Class C2
- Conflict Area assessment

0 50 100 150 200

Notes: SCALE: METRES

Minimum luminous intensity class:

- G*4 for M1 J24
- G*6 for the A453 / EMG1 junction and M1 works in vicinity of the airport

P02	13.06.25	Updated to latest scheme		SRH	SRH
P01	18.03.25	Preliminary Issue		JFP	SRH
Rev	Date	Details of issue / revision		Drw	Rev

Issues & Revisions

BWB

A CAF GROUP COMPANY

Birmingham | 0121 233 3322

Leeds | 0113 233 8000

London | 020 7407 3879

Manchester | 0161 233 4260

Nottingham | 0115 924 1100

www.bwbconsulting.com

Client

SEGRO

Project Title

EAST MIDLANDS GATEWAY 2 (EMG2)

Drawing Title

LIGHTING STRATEGY - LEICESTERSHIRE COUNTY COUNCIL NETWORK

Drawn:		Reviewed:	
BWB Ref:	220500	Date:	18.03.25
Scale@A1:		1:2500	
Drawing Status			
FOR INFORMATION			
Project - Originator - Zone - Level - Type - Role - Number		Status	Rev
EMG2-BWB-HLG-ZZ-DR-CH-1301		S2	P02

© Copyright BWB Consulting Ltd

J:\2022\220500-East Midlands Gateway Phase 2\ProjectDelivery\01-WP\Drawings\EMG2-BWB-HLG-ZZ-DR-CH-1301_Lighting Strategy.dwg